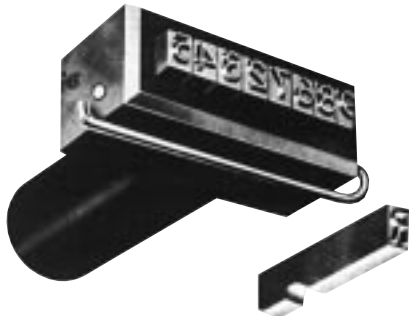
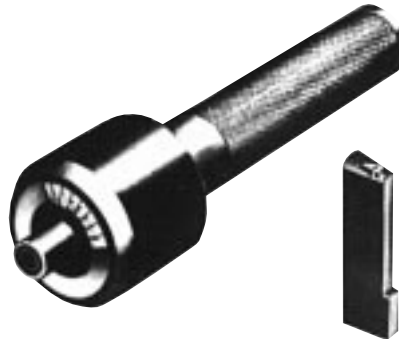


Straight Type



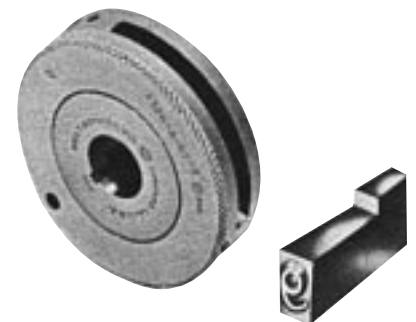
Straight type and typeholders are used for multiple character stamping with frequent set-up changes. A locking pin holds type in place.

Radial Type



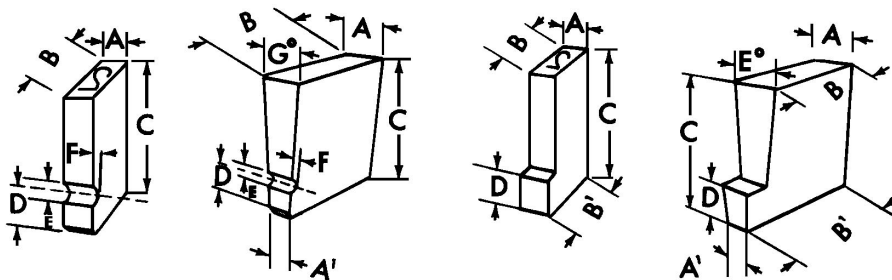
Radial type and typeholders are designed to mark gears, cutters, pulleys, bushings or similar parts. They may be incorporated right into production equipment.

Knurl Type



Knurl type and typeholders are used to roll impressions into flat pieces. Recommended for tough marking jobs ... or long production runs.

TYPE BLANK DIMENSIONS



Straight Grooved Type

Knurl Grooved Type

Straight Step Type

Knurl Step Type

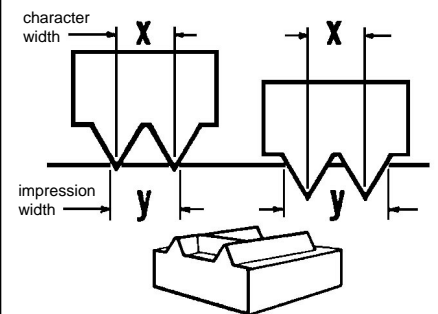
To facilitate handling between shop, office and field engineers, we have adopted a standard procedure for stating blank dimensions.

Straight Type Blanks

Length or A dimension is left to right
Width or B dimension is top to bottom
Height or C dimension is face to back
D dimension locates groove or step

Example: 1/8" x 1/4" x .875"; groove .500" x .156"

IMPRESSION SIZE



Character size is specified according to its measurement at the face, but impression size will vary according to depth of penetration. Item "X" (the specified character size or width) remains constant – while item "Y" (the impression width) increases with the depth of penetration into the workpiece surface.