

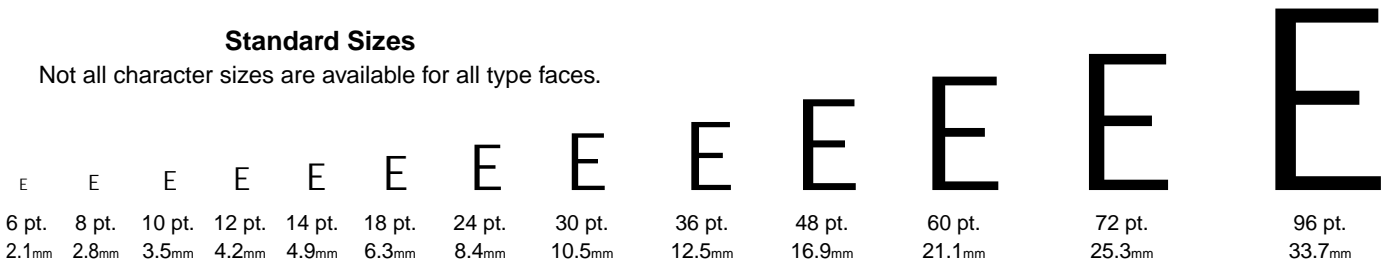
Brass type blanks are standard type high (.918"/23.3 mm), but can also be machined to any custom height.

Brass Type is an economical, general purpose type for marking most materials such as: books, leather, plastics, paper and wood. Brass type outwears softer metals and holds up well when stamping under heat and/or pressure.

Standard Type Faces 6 pt. thru 36 pt.	News Gothic (HUTCH Style)		
	A B C D E F G H I J K L M N O P Q R S T U V W X Y Z 0 1 2 3 4 5 6 7 8 9		
Standard Symbols	Category I	Category II	Category III
	. , ' - /	& \$ ¢ % * : ; ! () " " " " ° + =	® © ™
Standard Logos News Gothic 6 pt. thru 18 pt.	EXP JAN MAR MAY JUL SEP NOV LOT FEB APR JUN AUG OCT DEC		
Standard Spacers	44 piece Spacer Assortment Sets available in 6 pt. thru 36 pt.		

Standard Sizes

Not all character sizes are available for all type faces.



Brass Type Font Assortments

Characters	A	B	C	D	E	F	G	H	I	J	K	L	M	N	O	P	Q	R	S	T	U	V	W	X	Y	Z	1	2	3	4	5	6	7	8	9	0	.	,	-	&	\$	'	/	¢						
120 pcs. Caps	6	2	3	4	6	3	2	4	6	1	2	4	3	5	5	3	2	4	5	6	4	2	3	1	3	1	2	2	2	2	2	2	2	2	2	2	3	3	1	1	2									
160 (77 Caps) PCS. (83 L.C.)	4	3	3	3	4	3	2	3	4	1	2	3	3	3	3	1	3	3	4	2	1	3	1	3	1																									
	5	2	3	3	6	3	2	3	5	1	2	3	3	3	6	3	2	3	3	6	4	2	3	1	3	2																								

CODING TYPE FOR EVERY PACKAGING MACHINE

Toronto Stamp manufactures Brass and Steel Packaging Type used for coding, imprinting, labeling, embossing and debossing. Our packaging type is commonly used in cartoners, sealers, fillers and imprinters for hot or cold marking of labels, tags, packages, cartons, boxes, plastic and/or metal surfaces.

