

The Model 50 represents the finest marking device in the industry for rapid, accurate, and consecutive numbering. Since 1935, the Model 50 has been steadily improved to become an industry leader. We are still supplying parts and servicing units over 40 years old, a true testimonial to Numberall quality and design.

During the marking sequence, the actuating arms are extended and retracted by an external means to advance the machine to the next consecutive number. A pair of coil-return springs designed for each different frame provide the proper tension for smooth actuation.

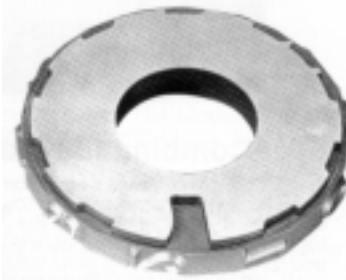
The zero suppression feature allows for the omitting of leading zeros when stamping low digit numbers.

The wheels are manually pre-set to the blank position between the "0" and "1" characters on the wheels. When the number is sequenced from 9 to 10, the tens wheel is indexed automatically from the blank position to the character "1". This procedure continues until all the automatic wheels have been advanced. Various size characters are available, from 1/32" up to 3/8". Special size characters, up to 1-3/4" characters, are available for quote.



Advantages of Model 50:

- One-piece wheel and index plate construction, to prevent misalignment and errors that can occur with two-piece construction
- Geometrically designed actuating pawl
- Zero suppression standard (to eliminate prefix zeros), provided at no extra charge
- Hard chrome plated actuating arms
- 1.5" diameter wheels for 1/32"-1/8" characters
- 2 1/4" diameter wheels and proportionally larger frame and parts for 5/32" and 3/16" character sizes
- 3" diameter wheels and proportionally larger frame and parts for 1/4", 5/16", and 3/8" character sizes
- 1 to 6 wheels can be automatically advanced
- Increased frame and leg widths with increasing number of wheels
- Thicker index plate, retaining pawl and actuating pawl prongs to all "unit" or "1"s wheel
- Option available to repeat the same number from 2 to 24 times before advancing (Air tripping required.)
- Wheels manufactured from the best heavy duty tool steel and precision heat-treated for severe usage and long life, at no extra charge



Characters on Standard Wheels

Figures 1 to 0

10 division automatically or manually set plus blank half-position

Letters A to M and blank

14 division manually set only

Letters N to Z and blank

14 division manually set only

Options

- Air-tripping attachment
- Multiple duplication attachment, allowing the operator to repeat the same number from 2 to 24 times before allowing the Model 50 to actuate (Note: Air tripping is required)
- Hot stamping equipment
- Proportional temperature control
- Insulating mounting plates
- All wheels indexed for direct reading
- Optional character styles and other configurations

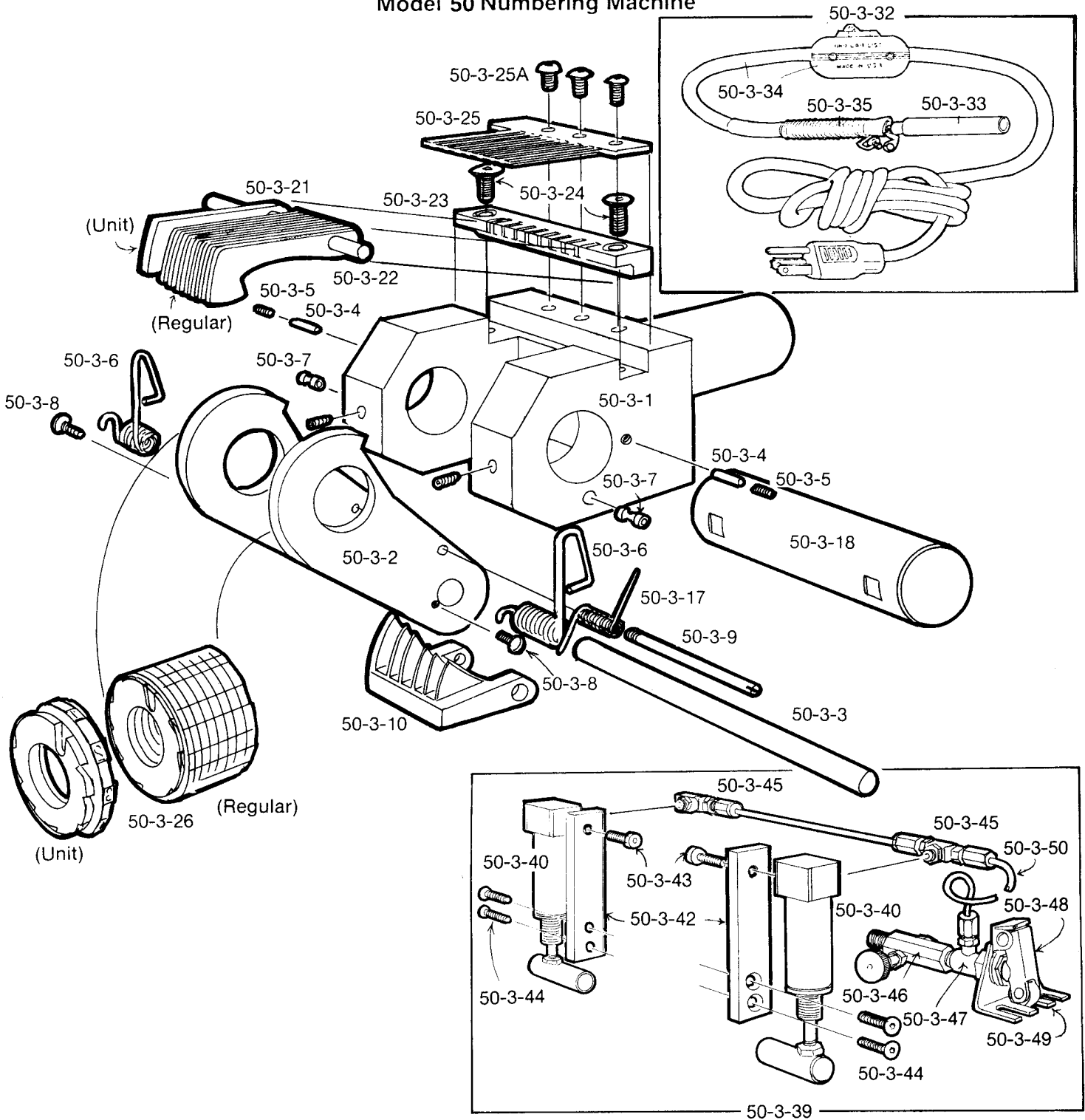
Standard Characters

Length of Impression Chart
Model 50

Number of Wheels	1/32"	1/16"	3/32"	1/8"	5/32"	3/16"	1/4"
5	0.292"	0.370"	0.445"	0.594"	0.749"	0.904"	1.059"
6	0.354"	0.448"	0.538"	0.719"	0.905"	1.091"	1.277"
7	0.416"	0.526"	0.631"	0.844"	1.061"	1.278"	1.495"
8	0.478"	0.604"	0.724"	0.969"	1.217"	1.465"	1.713"

Standard Shank
1" diameter, 2" long

Model 50 Numbering Machine



**Model 50 Automatic Numbering Machines
PARTS LIST I For 1/4" Through 3/8" Character Sizes**

50-3-1	Frame Refer to Factory for Replacement
50-3-2	Actuating Arms (w/Cross Head & A. Pawl Shaft)
50-3-3	Arm Bar
50-3-4	Actuating Arms Stop Pins (2 req'd)
50-3-5	Actuating Arm Stop Pin Screws (2 req'd)
50-3-6	Coil Return Spring (2 req'd)
50-3-7	Coil Return Spring Pins (2 req'd)
50-3-8	Coil Return Spring Screws (2 req'd)
50-3-9	Actuating Pawl Shaft
50-3-10	Actuating Pawl (Std. 4 or 6 Wheels)
50-3-17	Actuating Pawl Spring
50-3-18	Wheel Shaft (standard)
50-3-19	Wheel Shaft (Model 250, hollow)
50-3-20	Wheel Shaft Set Screws (2 req'd)
50-3-21	Retaining Pawls (reg. or unit)
50-3-22	Retaining Pawl Shaft
50-3-h	Pawl Block
50-3-24	Pawl Block Screws (2 req'd)
50-3-25	Retaining Pawl Spring
50-3-25A	Retaining Pawl Spring Screws
50-3-26	Wheels (as per price list, specify Reg. or Unit)
50-3-32	Hot Stamping (Electrical Parts Assembly)
50-3-33	Heater
50-3-34	Cord and Switch
50-3-35	Coil Spring Protector
50-3-36	Insulation (Plastic & Fibre Glass)
50-3-37	Coil Return Spring Rollers (2 req'd)
50-3-38	Coil Return Spring Roller Screws (2 req'd)
50-3-39	Air Trip Mechanism (complete)
50-3-40	Air Trip Mechanism Cylinders (2 req'd)
50-3-41	Air Trip Mechanism Cylinders Heat Resistant
50-3-42	Air Cylinder Mounting Bars (2 req'd)
50-3-43	Air Cylinder Mounting Screws (2 req'd)
50-3-44	Air Cylinder Mounting Bar Screws (4 req'd)
50-3-45	Air Brass Fittings (6 req'd)
50-3-46	Air Speed Control
50-3-47	Air Valve
50-3-48	Air Valve Roller Actuator
50-3-49	Air Valve/Speed Control Mounting Bracket
50-3-50	Teflon Tubing