

The Custom Steel Stamps illustrated below are typical examples of those used for mass production in various materials: metals, plastics, leathers and woods. Expertly machined for use in almost any type of marking or fabricating machine, they are adaptable to an infinite range of products.

Toronto Stamp offers a twofold service. (1) The entire die can be made, performing all necessary precision machining of shank to fit press ram to minute tolerances. (2) We will simply engrave and properly temper blanks to specifications furnished.



APPROXIMATE STAMPING PRESSURE CHART

BASED ON CAST IRON OR MILD STEEL

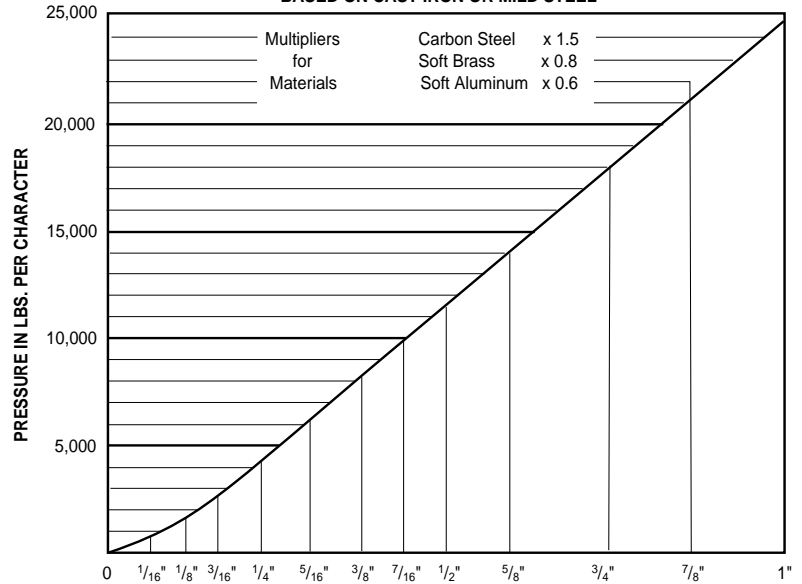


CHART BASED ON THE FOLLOWING DEPTHS:

1/16" = .003"	7/16" = .016"
1/8" = .006"	1/2" = .017"
3/16" = .008"	5/8" = .020"
1/4" = .010"	3/4" = .020"
5/16" = .013"	7/8" = .020"
3/8" = .016"	1" = .020"

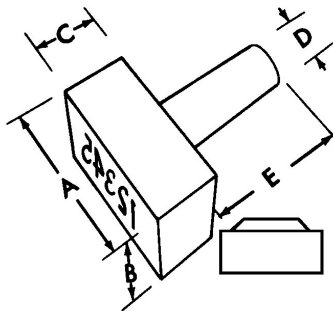
MULTIPLIERS FOR DEPTH

2 x Depth Below	= x 1.35
3 x Depth Below	= x 1.68
1/2 x Depth Below	= x 0.75

Characters Size:
Sharp face Gothic

MACHINE BLANK DIMENSIONS

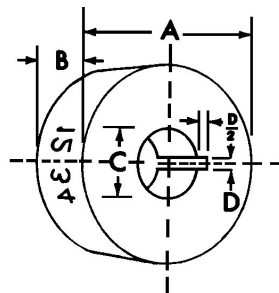
To facilitate handling between our Plant and our Sales Department, we have adopted a standard procedure for stating blank dimensions.



Shank Style Dies

Body dimensions followed by shank diameter, body length and shank length.

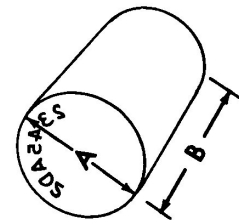
Example: Body 1 1/2" diameter x 1 1/2" long; Shank 1" diameter x 1 1/2" long.



Knurl Blanks

A dimension – diameter
B dimension – thickness
C dimension – bore
D dimension – keyway

Example: 3" diameter x 3/4" thick x 3/4" bore with 1/8" x 1/8" keyway.



Simple Round Dies

1st dimension or A dimension is the diameter
2nd dimension or B dimension is the length

Example: 3/4" diameter x 2" long