

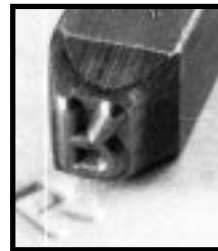
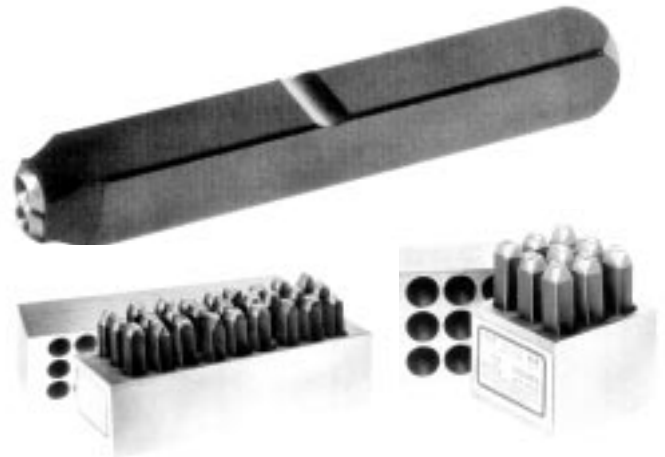
The best materials make the best stamps.

All of our steel stamps are made with carbon tool steel. They're tough enough to keep on stamping long after other stamps lose their face. We use a special heat treatment so they won't shatter under stress.



The easiest way to make your mark.

Gruv-Grip steel letter and figure stamps are furnished in gothic-style characters, level on the face and square with the shank, with crowned hammer ends. Each stamp has the exclusive, dual-purpose thumb groove for a sure grip. Finding the thumb side is easy, even in low light. These features ensure a good, accurate impression.



Machine-Made

More marks per dollar with this economical, quality steel stamp. Sharp characters in Gothic style ensure deep, clear impressions. One thumb groove.

Letter Sets (27 characters)

| Char. Size | Blank Sq. | Size Len. |
|------------|-----------|-----------|
| 1/16" | 1/4" | 2 3/8" |
| 3/32" | 1/4" | 2 3/8" |
| 1/8" | 1/4" | 2 3/8" |
| 3/16" | 5/16" | 2 7/16" |
| 1/4" | 3/8" | 2 5/8" |
| 3/8" | 1/2" | 2 7/8" |
| 1/2" | 5/8" | 3 3/8" |

Figure Sets (9 characters)

| Char. Size | Blank Sq. | Size Len. |
|------------|-----------|-----------|
| 1/16" | 1/4" | 2 3/8" |
| 3/32" | 1/4" | 2 3/8" |
| 1/8" | 1/4" | 2 3/8" |
| 3/16" | 5/16" | 2 7/16" |
| 1/4" | 3/8" | 2 5/8" |
| 3/8" | 1/2" | 2 7/8" |
| 1/2" | 5/8" | 3 3/8" |

Hand-Cut

Individually inspected character with special handground taper to assure precision impression alignment. Character identification and one thumb groove.

Letter Sets (27 characters)

| Char. Size | Blank Sq. | Size Len. |
|------------|-----------|-----------|
| 1/16" | 1/4" | 2 3/8" |
| 3/32" | 1/4" | 2 3/8" |
| 1/8" | 1/4" | 2 3/8" |
| 3/16" | 5/16" | 2 7/16" |
| 1/4" | 3/8" | 2 5/8" |
| 3/8" | 1/2" | 2 7/8" |
| 1/2" | 5/8" | 3 3/8" |

Figure Sets (9 characters)

| Char. Size | Blank Sq. | Size Len. |
|------------|-----------|-----------|
| 1/16" | 1/4" | 2 3/8" |
| 3/32" | 1/4" | 2 3/8" |
| 1/8" | 1/4" | 2 3/8" |
| 3/16" | 5/16" | 2 7/16" |
| 1/4" | 3/8" | 2 5/8" |
| 3/8" | 1/2" | 2 7/8" |
| 1/2" | 5/8" | 3 3/8" |

Heavy-Duty

Made to meet the demands of rigid service. Extra heavy, extra length shank with heavy supporting bevel. Character identification and size, three thumb grooves.

Letter Sets (27 characters)

| Char. Size | Blank Sq. | Size Len. |
|------------|-----------|-----------|
| 1/32" | 1/4" | 2 3/8" |
| 1/16" | 1/4" | 2 3/8" |
| 3/32" | 5/16" | 2 1/2" |
| 1/8" | 5/16" | 2 1/2" |
| 5/32" | 3/8" | 2 3/4" |
| 3/16" | 3/8" | 2 3/4" |
| 1/4" | 7/16" | 3" |
| 5/16" | 1/2" | 3" |
| 3/8" | 9/16" | 3 1/8" |
| 1/2" | 3/4" | 3 3/4" |
| 5/8" | 7/8" | 3 3/4" |

Figure Sets (9 characters)

| Char. Size | Blank Sq. | Size Len. |
|------------|-----------|-----------|
| 1/32" | 1/4" | 2 3/8" |
| 1/16" | 1/4" | 2 3/8" |
| 1/8" | 5/16" | 2 1/2" |
| 5/32" | 3/8" | 2 3/4" |
| 3/16" | 3/8" | 2 3/4" |
| 1/4" | 7/16" | 3" |
| 5/16" | 1/2" | 3" |
| 3/8" | 9/16" | 3 1/8" |
| 1/2" | 3/4" | 3 3/4" |
| 5/8" | 7/8" | 3 3/4" |

Reversed

For use in marking plastic molds, rubber molds, thin metal patterns, forging dies, etc. Produces a reversed impression in the mold which makes a raised letter on the molded product. Character identification and size, three thumb grooves.

Letter Sets (27 characters)

| Char. Size | Blank Sq. | Size Len. |
|------------|-----------|-----------|
| 1/32" | 1/4" | 2 3/8" |
| 1/16" | 1/4" | 2 3/8" |
| 3/32" | 5/16" | 2 1/2" |
| 1/8" | 5/16" | 2 1/2" |
| 5/32" | 3/8" | 2 3/4" |
| 3/16" | 3/8" | 2 3/4" |
| 1/4" | 7/16" | 3" |
| 5/16" | 1/2" | 3" |
| 3/8" | 9/16" | 3 1/8" |
| 1/2" | 5/8" | 3 3/8" |

Figure Sets (9 characters)

| Char. Size | Blank Sq. | Size Len. |
|------------|-----------|-----------|
| 1/32" | 1/4" | 2 3/8" |
| 1/16" | 1/4" | 2 3/8" |
| 3/32" | 5/16" | 2 1/2" |
| 1/8" | 5/16" | 2 1/2" |
| 5/32" | 3/8" | 2 3/4" |
| 3/16" | 3/8" | 2 3/4" |
| 1/4" | 7/16" | 3" |
| 5/16" | 1/2" | 3" |
| 3/8" | 9/16" | 3 1/8" |
| 1/2" | 5/8" | 3 3/8" |

Round face Full Character

The cutting edge of the character is 1/32" radius, with a 40° bevel. Rounded character stamp makes low stress impressions suitable for use anywhere metal strength is critical. The aircraft, missile, oil supply and nuclear power industries depend on these stamps to avoid risk of fracture from too sharp an imprint. Character identification and size, three thumb grooves.

Letter Sets (27 characters)

| Char. Size | Blank Sq. | Size Len. |
|------------|-----------|-----------|
| 1/8" | 5/16" | 2 1/2" |
| 3/16" | 3/8" | 2 3/4" |
| 1/4" | 7/16" | 3" |
| 5/16" | 1/2" | 3" |
| 3/8" | 9/16" | 3 1/8" |
| 1/2" | 5/8" | 3 3/8" |

Figure Sets (9 characters)

| Char. Size | Blank Sq. | Size Len. |
|------------|-----------|-----------|
| 1/8" | 5/16" | 2 1/2" |
| 3/16" | 3/8" | 2 3/4" |
| 1/4" | 7/16" | 3" |
| 5/16" | 1/2" | 3" |
| 3/8" | 9/16" | 3 1/8" |
| 1/2" | 5/8" | 3 3/8" |

Round face Dot Design

The cutting edge of the character is 1/32" radius, with a 40° bevel. For use in aircraft, missile, oil supply and nuclear power industries and other applications where lowest stress impressions are critical. Round face - dot design eliminates risk of fracture from too sharp an impression. Character identification and size, three thumb grooves.

Letter Sets (27 characters)

| Char. Size | Blank Sq. | Size Len. |
|------------|-----------|-----------|
| 1/8" | 5/16" | 2 1/2" |
| 3/16" | 3/8" | 2 3/4" |
| 1/4" | 7/16" | 3" |
| 3/8" | 9/16" | 3 1/8" |

Figure Sets (9 characters)

| Char. Size | Blank Sq. | Size Len. |
|------------|-----------|-----------|
| 1/8" | 5/16" | 2 1/2" |
| 3/16" | 3/8" | 2 3/4" |
| 1/4" | 7/16" | 3" |
| 3/8" | 9/16" | 3 1/8" |