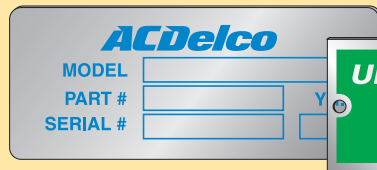


PhotoAnodized Aluminum Nameplates

Design sealed into aluminum.



Colours and designs are permanently photoanodized into rigid aluminum. Will not peel, chip, flake or crack regardless of age. **Not A Printed Plate** - lettering sealed into the aluminum - resists solvents, gasoline, steam cleaning and abrasion. Available with either coloured lettering and borders against an aluminum background (Style PO) or with aluminum lettering, pads and border against a coloured background (Style NE). Supplied complete with two mounting holes. Maximum one side dimension ... 5 1/2".



Style PO



Style NE

CAPMATIC TEL.: (514) 322-0062 FAX: (514) 322-0063 MONTREAL, CANADA

MOD.:	V.
SER.#	A.
PSI:	HZ. PH.
CFM:	DATE:

SPEC DOCUMENT
1106

... Nameplate Considerations

SPEC DOCUMENT
1189

... Nameplate Substrates

SPEC DOCUMENT
1178

... Nameplate Adhesives

PhotoAnodizing Colours

Black	Turquoise
Brown	Red
Blue	Light Green
Orange	Dark Blue
Dark Green	Yellow
Purple	

Free Colour Chart

ROMAC INC.
32 STEELES AVE. E., UNIT 8, MILTON, ONT. L9T 5A1
PHONE (905) 876-4739 FAX (905) 876-4451

PART # _____
REF# _____
PROGRESSION _____
STRIP WIDTH _____
MATERIAL _____

SHUT HEIGHT _____
WEIGHT lbs. _____

MAX. STORAGE CAPACITY **250** POUNDS

DO NOT EXCEED TOTAL WEIGHT OR TOTAL HEIGHT

MAX. STACK HEIGHT **5** HIGH

Free Samples

Delivery: 2-3 weeks

PhotoAnodized Aluminum Nameplates. Photoanodized one colour. 0.020" thick. Two holes. Square corners. Artwork extra. Prices each nameplate.

Area (sq. in.)	Prices each Nameplate						
	100	250	500	1,000	2,500	5,000	10,000
Up to 1	\$ 3.99	1.91	1.04	0.72	0.52	0.48	0.40
Up to 2	4.32	1.94	1.12	0.73	0.60	0.52	0.47
Up to 3	4.34	2.12	1.26	0.82	0.65	0.52	0.43
Up to 4	4.48	2.37	1.34	1.12	0.67	0.58	0.54
Up to 5	4.83	2.42	1.35	1.16	0.72	0.63	0.53
Up to 6	5.07	2.28	1.37	1.11	0.76	0.61	0.56
Up to 7	5.27	2.80	1.79	1.27	-	-	-
Up to 8	5.47	2.84	1.97	1.26	-	-	-
Up to 9	5.76	3.05	1.96	1.38	-	-	-
Up to 10	5.87	3.17	2.11	-	-	-	-
Up to 11	6.05	3.39	2.18	-	-	-	-
Up to 12	6.17	3.58	2.41	-	-	-	-
Four Holes	+ 0.39	+ 0.18	+ 0.15	+ 0.14	+ 0.13	+ 0.11	+ 0.10
Round Corners	+ 0.39	+ 0.26	+ 0.23	+ 0.22	+ 0.21	+ 0.20	+ 0.18
Numbering	+ 0.39	+ 0.18	+ 0.15	+ 0.14	+ 0.13	+ 0.11	+ 0.10

Larger quantities ... phone for a **FAST QUOTE**

CATERPILLAR

MADE IN CANADA

PART # _____
PRODUCTION # _____
DATE _____

PRODUCT DATA SHEET
S-202

... Nameplate Marking Solutions

SPEC DOCUMENT
1300

... Nameplate Reference Chart

Pressure-Sensitive Adhesive Back (3M 468) ... + \$0.06/in²
0.032" Aluminum ... + 20%
Protective Film ... + \$0.03/in²