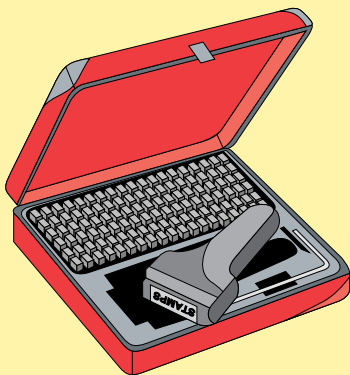


Steel Type



by **Pryor**



...Steel Type

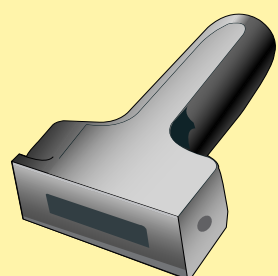


The perfect answer to general purpose marking. Pryor Interchangeable Steel Type is tempered for maximum endurance and nickel-plated to resist rust. Not only is the impression uniform in depth, spacing and alignment, but the type can be rapidly changed. Available as single pieces or font sets with or without type holders. Font sets are comprised of 100 letters and figures (see at right), conveniently packaged in a storage box with a supply of spacers.

100 pc. Font			
A	3 pcs.	Q	1 pc.
B	2 pcs.	R	3 pcs.
C	2 pcs.	S	3 pcs.
D	2 pcs.	T	2 pcs.
E	4 pcs.	U	3 pcs.
F	2 pcs.	V	1 pc.
G	2 pcs.	W	2 pcs.
H	2 pcs.	X	2 pcs.
I	3 pcs.	Y	1 pc.
J	2 pcs.	Z	1 pc.
K	2 pcs.	&	1 pc.
L	3 pcs.	.	2 pcs.
M	2 pcs.	,	2 pcs.
N	2 pcs.	-	2 pcs.
O	3 pcs.	/	2 pcs.
P	2 pcs.	1	4 pcs.
		2	4 pcs.
		3	3 pcs.
		4	4 pcs.
		5	3 pcs.
		6	3 pcs.
		7	3 pcs.
		8	3 pcs.
		9	3 pcs.
		0	3 pcs.

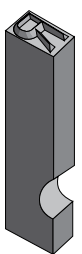
Character Size	Blank Dimensions (W x H x L)	Single Pieces	Blank Spacers	Font Set	Spacers per Set	Font Set c/w Holder	Holder Number	Holder Capacity
0.040" (1.0mm)	1.6 x 3.2 x 15.87	\$ 8.40 ea.	\$ 3.80 ea.	\$ 698.80	12	\$ 832.80	H3.2-20	12 pcs.
1/16" (1.5mm)	1.6 x 3.2 x 15.87	8.40 ea.	3.80 ea.	698.80	12	832.80	H3.2-20	12 pcs.
5/64" (2.0mm)	2.0 x 6.35 x 19.05	8.40 ea.	3.80 ea.	698.80	12	848.80	H6.35-29	14 pcs.
3/32" (2.5mm)	2.4 x 6.35 x 19.05	8.40 ea.	3.80 ea.	698.80	12	848.80	H6.35-29	12 pcs.
1/8" (3.0mm)	3.2 x 6.35 x 19.05	8.80 ea.	3.80 ea.	698.80	12	848.80	H6.35-29	9 pcs.
5/32" (4.0mm)	4.8 x 8.0 x 19.05	9.80 ea.	3.80 ea.	818.80	6	962.80	H8.0-39	9 pcs.
3/16" (5.0mm)	4.8 x 8.0 x 19.05	9.80 ea.	3.80 ea.	818.80	6	962.80	H8.0-39	8 pcs.
1/4" (6.0mm)	6.4 x 9.5 x 19.05	14.60 ea.	4.20 ea.	1,188.80	6	1,498.80	H9.6-40	6 pcs.
3/8" (10.0mm)	9.5 x 16.0 x 25.4	21.20 ea.	7.60 ea.	1,498.80	6	1,954.80	H16-57	6 pcs.

Hand Typeholders

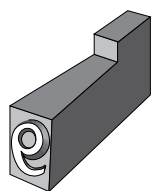


Holder Number	Slot Size (H x L)	Price Each
H3.2-20	3.20mmX20mm	\$152.80
H6.35-29	6.35mmX29mm	168.80
H6.35-39	6.35mmX39mm	176.80
H8.0-39	8.0mmX39mm	182.80
H9.6-40	9.6mmX40mm	412.80
H16-57	16.0mmX57mm	488.80

Custom Steel Type



Multiple character type dies are also available.

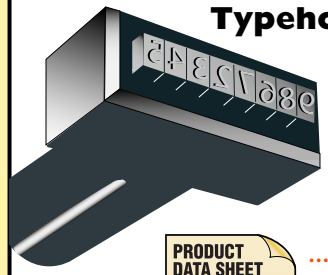


... Custom Steel Type

We can produce custom steel type to meet your exact requirements.

Phone or fax for a **FAST QUOTE**

Machine Typeholders



... Press Type Holders

Straight, radial and knurl typeholders can be made to your specifications ...

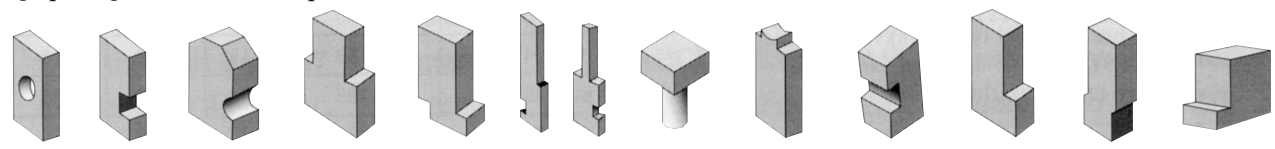
Phone or fax for a **FAST QUOTE**



... Brass Type

Coding Type for every Packaging Machine

Toronto Stamp is the source for Brass and Steel Packaging Type used for coding, imprinting, labeling, embossing and debossing. Our packaging type is commonly used in cartoners, sealers, fillers and imprinters for hot or cold marking of labels, tags, packages, cartons, boxes, plastic and/or metal surfaces.



Utility Arenco Schmidt T-Type Norwood Markem Doboy Concave Avery Jones Kwik-Lok Markem