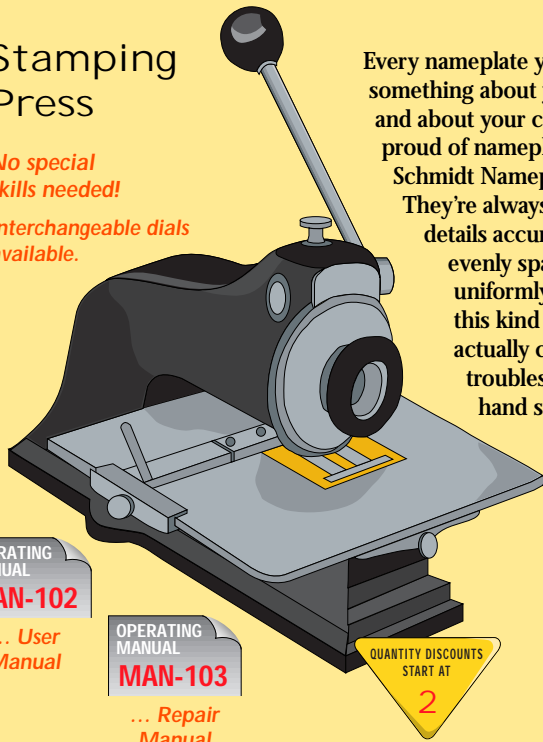


Stamping Press

No special skills needed!
Interchangeable dials available.



Every nameplate you mark says something about your products ... and about your company. You'll be proud of nameplates marked with Schmidt Nameplate Presses. They're always easy to read with details accurately aligned ... evenly spaced ... and uniformly deep. Best of all, this kind of quality can actually cost far less than troublesome, inaccurate hand stamping methods.

SPEC DOCUMENT
1005
... Parts List + Instructions

OPERATING MANUAL
MAN-102

... User Manual

OPERATING MANUAL
MAN-103

... Repair Manual

QUANTITY DISCOUNTS START AT
2

Five Sizes of Characters

1/16 CHARACTERS
3/32 CHARACTERS
1/8 CHARACTERS
3/16 CHARACTERS
1/4 CHARACTERS

Characters on Standard Dial

ABCDEFGHIJKLMNOPQRSTUVWXYZ
UVWXYZ&1234567890.-/

40 Characters - 1/8" size shown

Delivery: 1 week

Stamping Press. Hi-Loy sharp face dial.	Model 4	Model 6	Dial only
1/16", 3/32", 1/8" character size	\$3148.00	\$3538.00	\$1478.00
3/16" character size	3498.00	3898.00	1744.00
1/4" character size	3942.00	4284.00	2068.00



A great looking nameplate is the biggest benefit of all; it serves as a "silent salesman", making a good impression whenever it is seen.



... Aluminum Nameplates

Model	Table Dimensions	Data Plate Sizes	Data Plate Thickness	Marking Limits	Weight
4	9 3/4" x 7 3/4"	Up to 4" deep and 8" wide	.012" to .093" thick	As low as 3 1/4" from top of nameplate	28 1/2 lbs. net 32 1/2 lbs. shipping
6	9 3/4" x 11"	Up to 8" deep and 8" wide	.012" to .093" thick	As low as 6" from top of nameplate	42 1/2 lbs. net 54 lbs. shipping

Marking Press

Micro-Percussion Marking ... identification and traceability

The Pro-Pen P5000 uses dot peen marking ... up to 5 characters per second. Due to its screen, keyboard and integrated software, the P5000 is completely independent. Marks serial numbers, logos, date and time, production codes



PRODUCT DATA SHEET
IN-128

... Marking Press

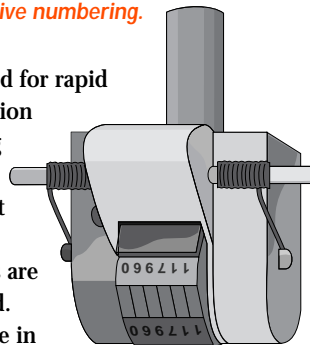
BROCHURE
BR-127

... Pro-Pen P5000

Automatic Numbering Head

Rapid, accurate consecutive numbering.

Designed for rapid production marking where frequent number changes are required. Available in sizes from 1/16" to 3/8" and from 3 to 14 wheels. Wheels and frames are manufactured from top quality steel, and heat treated for optimum results. Heavy duty shaft.



PRODUCT DATA SHEET
IN-122

... Numbering Heads

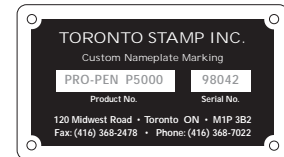
SPEC DOCUMENT
1009

... Numbering Heads

Nameplate Release Program

Lower cost nameplates ... no tooling, machinery, labour, scrap ... in one day!

Have you analyzed your total cost of marking Nameplates ... tools, machinery, labour and scrap easily exceed the cost of the nameplate.



Toronto Stamp will hold your nameplates for future marking. On receipt of your information, Toronto Stamp will ship at no charge the marked nameplate(s) within 24 hours.

PRODUCT DATA SHEET
IN-130

... Release Program

SPEC DOCUMENT
1259

... Detail Cost Analysis