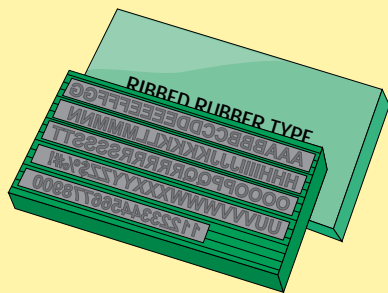
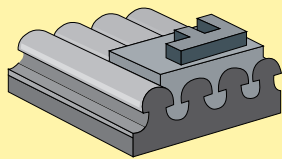


## Ribbed Rubber Type



**RIBtype®**



... VID-105



... Rubber Type

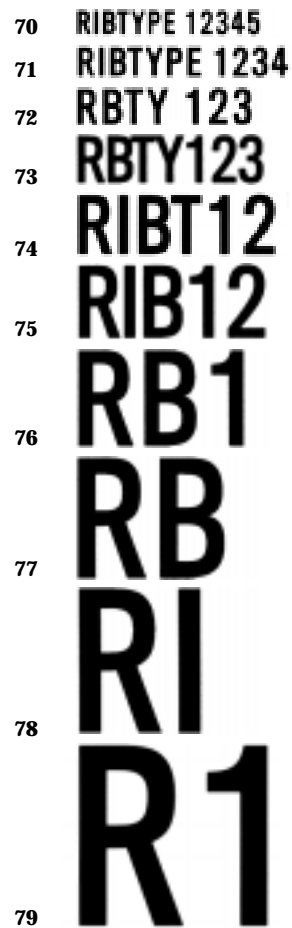


Delivery: 10 days

A complete system for making your own imprinting copy. Consists of self-aligning rubber type and cushion base to form interlocking, interchangeable words, dates and numerals.

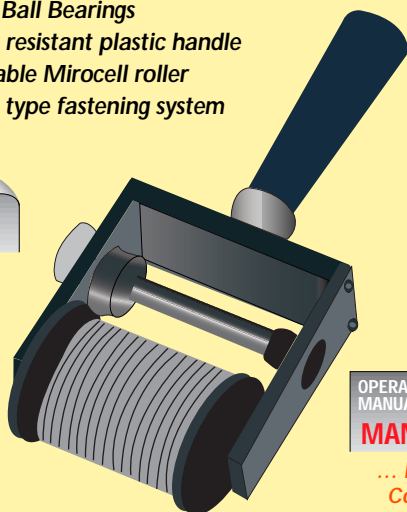
Char. Size	Char. /In.	Ribs	Figure Set	Font Size	Set Price	Figure+ Letter Set	Font Size	Set Price
1/8"	14	2	<b>FU-70</b>	5F	\$24.30	<b>TU-70</b>	5A	\$39.90
5/32"	12	2	<b>FU-71</b>	5F	25.90	<b>TU-71</b>	5A	40.80
3/16"	11	2	<b>FU-72</b>	4F	27.60	<b>TU-72</b>	5A	43.90
1/4"	8	2	<b>FU-73</b>	4F	29.20	<b>TU-73</b>	5A	45.60
5/16"	6 1/2	3	<b>FU-74</b>	4F	30.80	<b>TU-74</b>	5A	50.90
3/8"	5 1/2	3	<b>FU-75</b>	4F	32.50	<b>TU-75</b>	5A	62.80
1/2"	4	4	<b>FU-76</b>	4F	37.40	<b>TU-76</b>	5A	104.90
5/8"	3	5	<b>FU-77</b>	4F	43.40	<b>TU-77</b>	3A	101.60
3/4"	2 1/2	6	<b>FU-78</b>	4F	54.80	<b>TU-78</b>	3A	136.50
15/16"	2	7	<b>FU-79</b>	4F	60.50	<b>TU-79</b>	3A	142.10

Other sizes or styles ... Phone or fax for a **FAST QUOTE**



## Hand Coders

- ✓ Lightweight anodized aircraft aluminum frame
- ✓ Sealed Ball Bearings
- ✓ Impact resistant plastic handle
- ✓ Re-inkable Mirocell roller
- ✓ Ribbed type fastening system



An efficient, manual method of printing date codes, product or lot numbers. Ribbed rubber type make changing data quick and easy. Print area: 2" x 6 1/2". Weight: 1 lb. 11oz (0.77 kg).

Phone or fax for a **FAST QUOTE**

Delivery: 10 days

## Custom LogoType



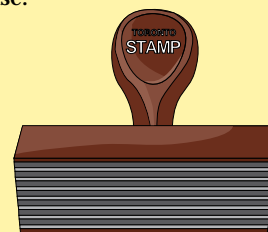
Phone or fax for a **FAST QUOTE**

Ideal for reducing set-up times ... one-piece logotype is available in any size, style or number of lines. Logos or trademarks also available

## Rubber Type Holders

Hand stamp with ribbed cushion attached. Ideal for marking variable information. Grooves lengthwise.

No.	Size (LxD)	Grooves	Price
<b>SL3</b>	2 1/4" x 1 1/2"	3	\$14.90
<b>SL4</b>	2 1/2" x 3/4"	4	15.50
<b>SL6</b>	2 3/4" x 1"	6	15.90
<b>SL8</b>	3" x 1 1/4"	8	16.90
<b>SL9</b>	3 1/4" x 1 1/4"	8	17.70
<b>SL10</b>	3 1/2" x 1 1/2"	10	20.80
<b>SL12</b>	3 3/4" x 1 3/4"	12	25.30
<b>SL13</b>	4" x 2"	13	26.90
<b>SL17</b>	4 1/2" x 2 1/2"	17	31.90



Delivery: 1 day

Also available in a rocker style for larger sizes, or a self-inking style for repetitive stamping ... ask for a **FAST QUOTE**