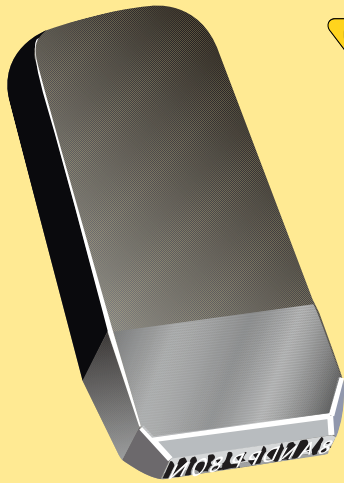


Custom Steel Hand Stamps



QUANTITY DISCOUNTS
START AT
2

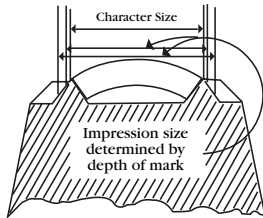
SPEC DOCUMENT
1190
... Steel Stamp Pressure Chart

Custom Steel Hand Stamps are ideal for marking an endless variety of products ... from soft metals to heavy steel mill billets and rolls. Careful and accurate engraving insures perfectly aligned, legible impressions of even depth. Manufactured from specially selected tool steels to a hardness of Rockwell 56-58.

Custom Steel Hand Stamps. One line of sharp face gothic characters.

Number Characters	Character Size						
	1/32"	1/16"	3/32"	1/8"	3/16"	1/4"	3/8"
2	\$138.80	\$108.80	\$101.80	\$107.80	\$117.80	\$142.80	\$177.80
3	168.80	129.80	120.80	129.80	138.80	170.80	208.80
4	194.80	148.80	138.80	146.80	157.80	205.80	242.80
5	207.80	164.80	153.80	168.80	185.80	213.80	-
6	218.80	185.80	174.80	183.80	204.80	229.80	-
7	246.80	211.80	201.80	210.80	214.80	268.80	-
8	255.80	226.80	228.80	232.80	234.80	-	-
9	283.80	241.80	234.80	253.80	286.80	-	-
10	317.80	265.80	258.80	267.80	317.80	-	-
11	333.80	286.80	274.80	297.80	-	-	-

Other sizes, multiple lines, low-stress characters ... **FAST QUOTE**



For determining the size of the stamped impression, add twice the depth of the impression to the size of the character at the face.

Delivery: 3 weeks

PRODUCT DATA SHEET
IN-106

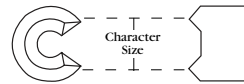
... Individual Steel Hand Stamps

Custom Steel Machine Stamps

Precision-made steel stamping dies, machined to fit any stamping press. Each die blank expertly engraved to reproduce any desired letters, numbers, graduations or trademarks.

Phone or fax for a **FAST QUOTE**

SPEC DOCUMENT
1015
... Custom Steel Stamps



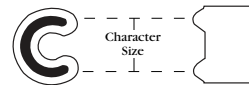
Sharp Face

Engraved so that character bevels produce a sharp, knife-like character face.



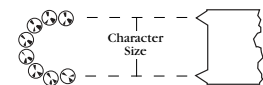
Flat Face

Character face is engraved flat to produce an easily filled impression.



Round Face

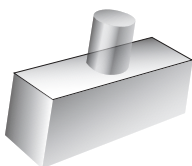
The face of character is convex to reduce stress set up by marking.



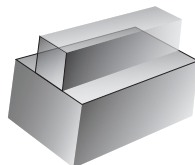
Dot Design

Character outline is formed by individual conically shaped dots of uniform bevel to reduce stress of marking.

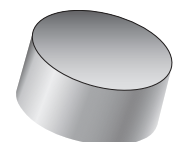
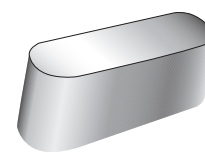
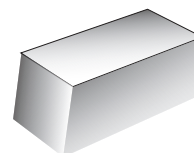
Standard Stamping Die Blanks



Round shank for press insertion. Recommended for use where the ram and die face thrust in the same direction with no sideward force exerted.



Rectangular shank for press insertion. Recommended for use where the ram thrust is sideways - across the face of the die (as in "rolled-in" marking).



For insertion in mortises of main or auxiliary dies or fixtures not requiring a shank. Blanks accurately shaped and precision machined with design features to meet press requirements.